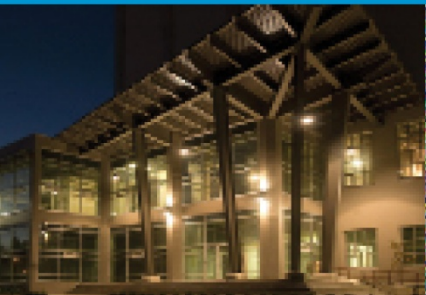


COMMUNITY SUSTAINABILITY PLANNING INITIATIVE

Community Sustainability Planning Initiative

Area H Advisory Committee
April 25, 2012

SHAPING OUR
FUTURE



What is Community Sustainability Planning?

- Sustainability = meeting the needs of the present without compromising the ability of future generations to meet their own needs (United Nations, 1987)
- integrated into municipal plans, strategies, and decision-making processes
- holistic & integrated
- ongoing

Project Deliverables

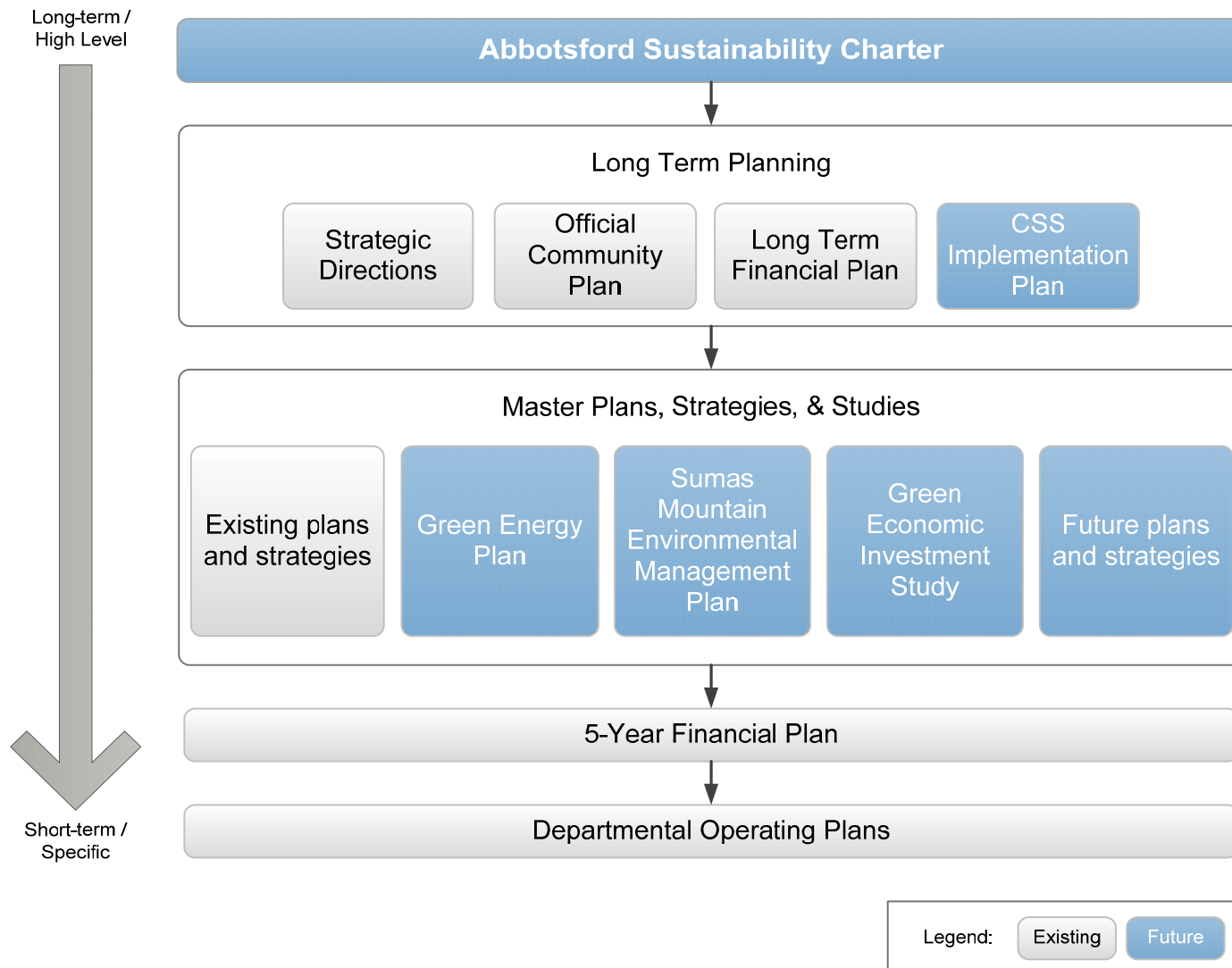
Project Team

- Stantec
- City Community Planning staff

Project Deliverables

- Community Sustainability Strategy (i.e. long-term vision) – Rod Shead
- Green Energy Plan (Community energy and emissions plan) – Pauline Favero
- Sumas Mountain Environmental Management Plan – Tanya Bettles
- Green Economic Investment Study - Pauline Favero and Ken Baerg

How does it fit with other plans?



Consultation and timelines

Stakeholder Consultation

- ☐ Public
- ☐ Business
- ☐ Industry
- ☐ City Staff
- ☐ Community Groups/Organizations
- ☐ Technical experts

Consultation Opportunities

- ☐ Advisory/Focus Groups
- ☐ Workshops
- ☐ Community Events
- ☐ Web based feedback
- ☐ Web/phone/print surveys
- ☐ Public open houses
- ☐ Targeted presentations
- ☐ Phone interviews

Project Timeline

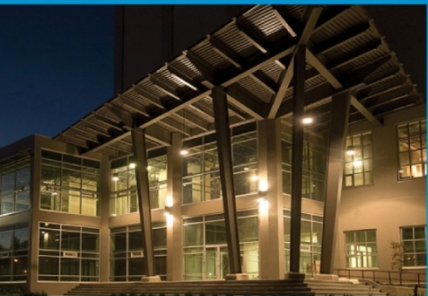
- ☐ Completion in early 2013
- ☐ Initiative ongoing

COMMUNITY SUSTAINABILITY STRATEGY

Community Sustainability Strategy

Area H Advisory Committee
April 25, 2012

SHAPING OUR
FUTURE



What is the Community Sustainability Strategy?

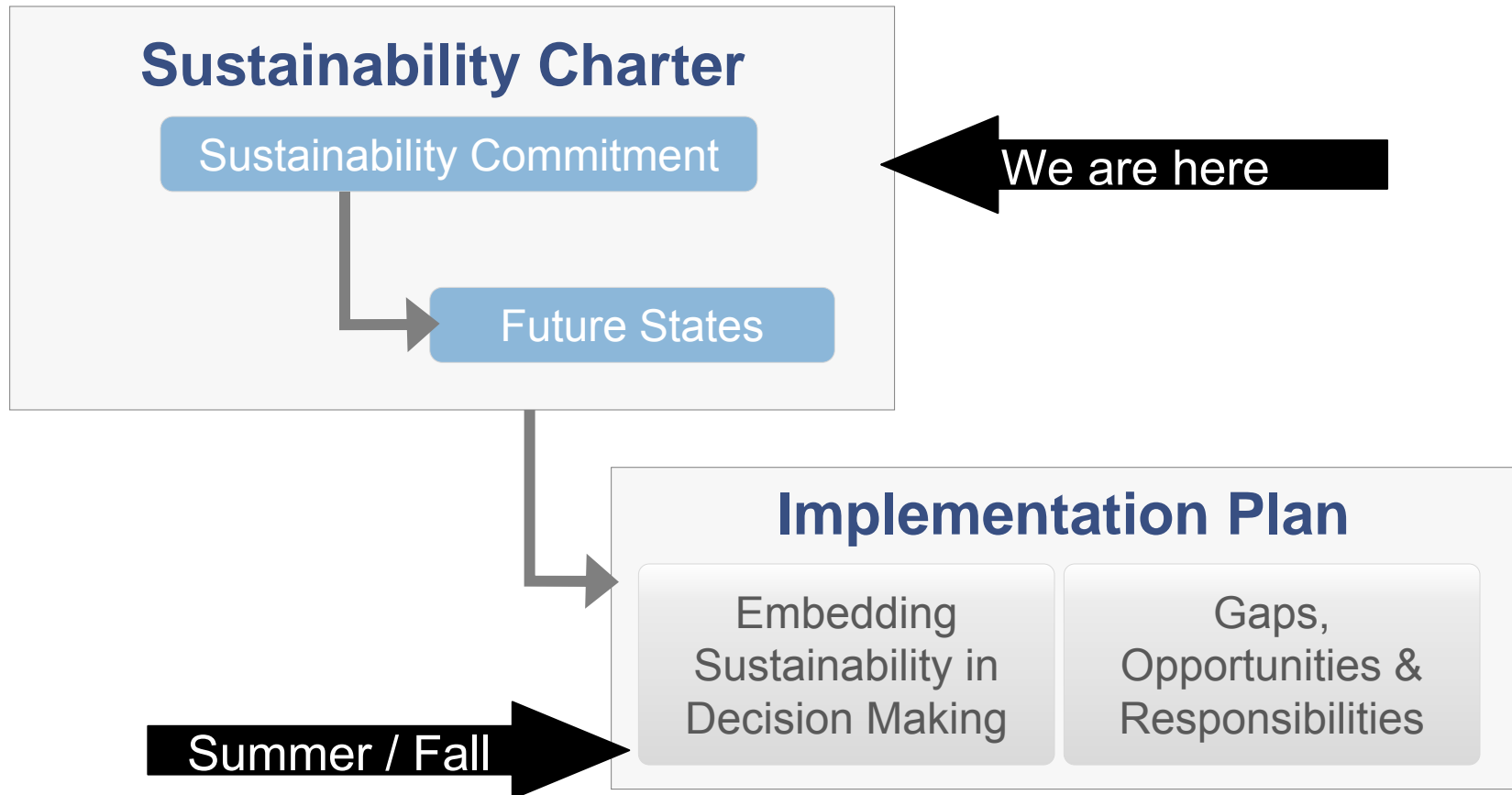
1. Update Charter of Sustainability

- Renew Sustainability Commitment
- Identify 'future states' (i.e. what a sustainable community looks like)

2. Develop Implementation Plan

- Identify Initiatives and Actions to accomplish "future states"
- Recommendations to align City plans, strategies and decision making with sustainability vision/commitment
- Identify sustainability 'gaps' and 'opportunities'
- Establish a framework to promote and implement the strategy

Where are we now?



Getting Involved

- Online surveys (this week)
- Attend open house (May 9th)
- Talk to staff

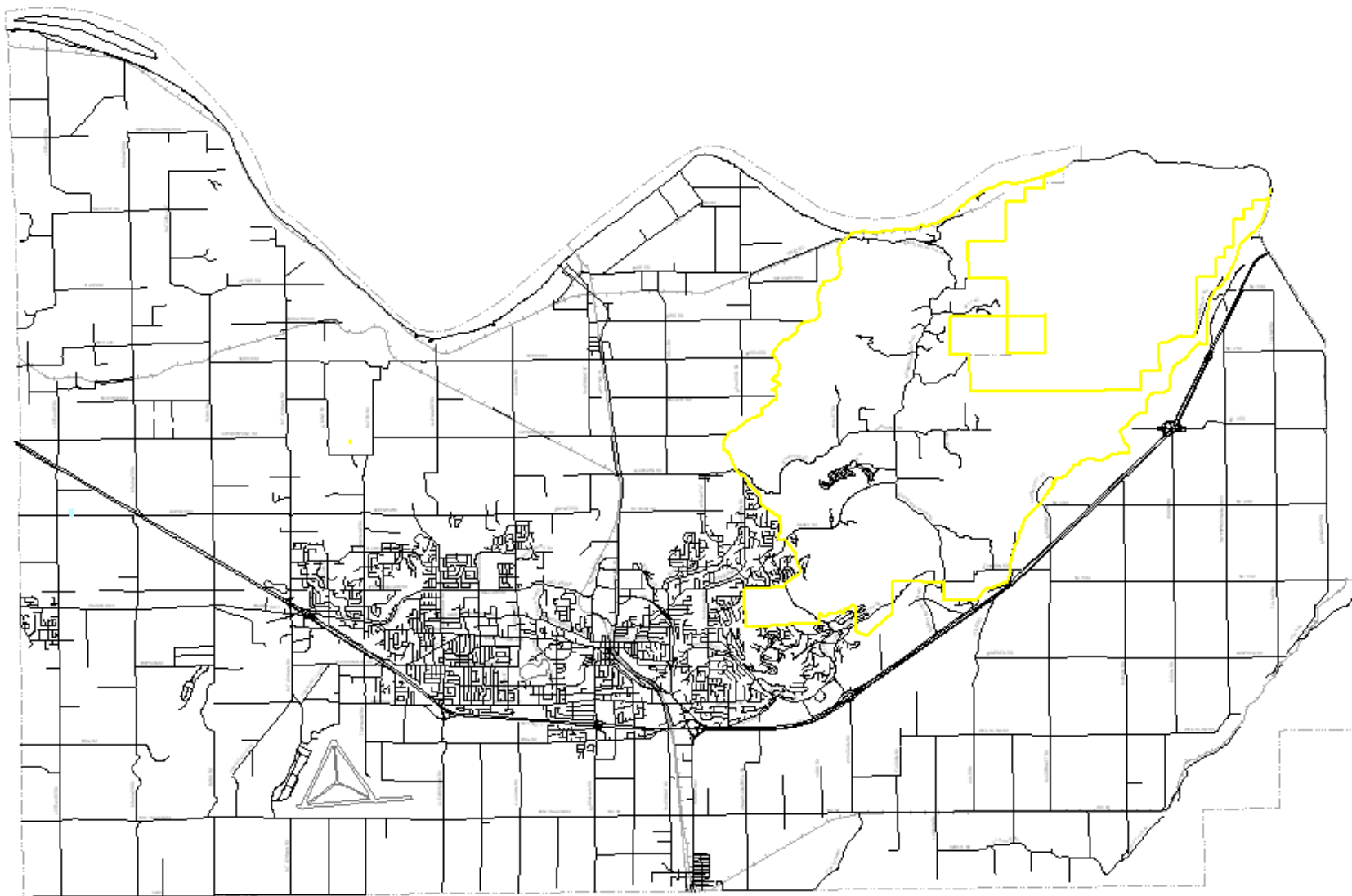
Sumas Mountain Environmental Management Plan

Area H Advisory Committee
April 25, 2012

SHAPING OUR
FUTURE



Study Area



Project Purpose

- Identify areas that can be:
 - developed
 - preserved or managed
- Directly inform OCP review

Why is Sumas Mountain unique?

- Known biological hotspot
- Over 40 species at risk observed
- 6 ecosystems at risk observed
- Additional 112 species at risk and 21 ecosystems at risk have potential to occur
- Hundreds of additional species not at risk

OCP

- A connected system of parks, protected areas, and recreational trails
- Property owners should provide corridors connecting the Park's two flanks
- Connections should be established between the park and the Fraser and Sumas Rivers

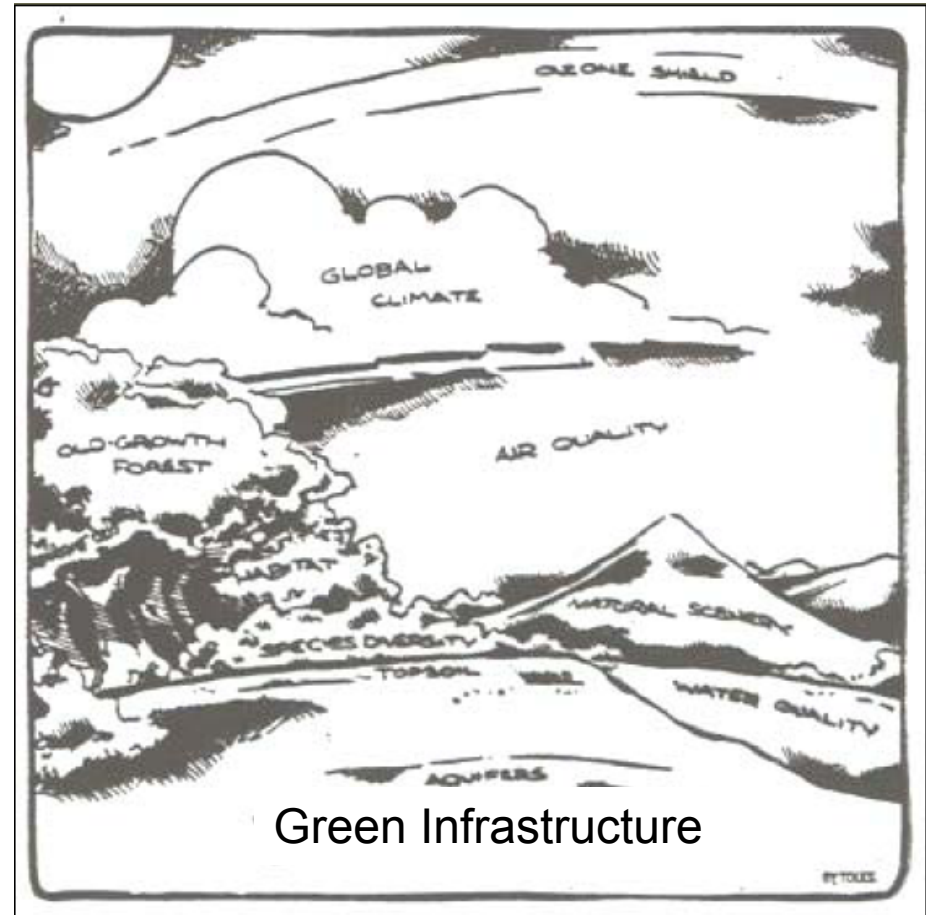
Project Components

- Delineate a Green Infrastructure Network
- Develop an environmental management areas (EMA) plan, with habitat management objectives for each EMA classification
- Summarize the ecological goods and services
- Prepare an implementation plan

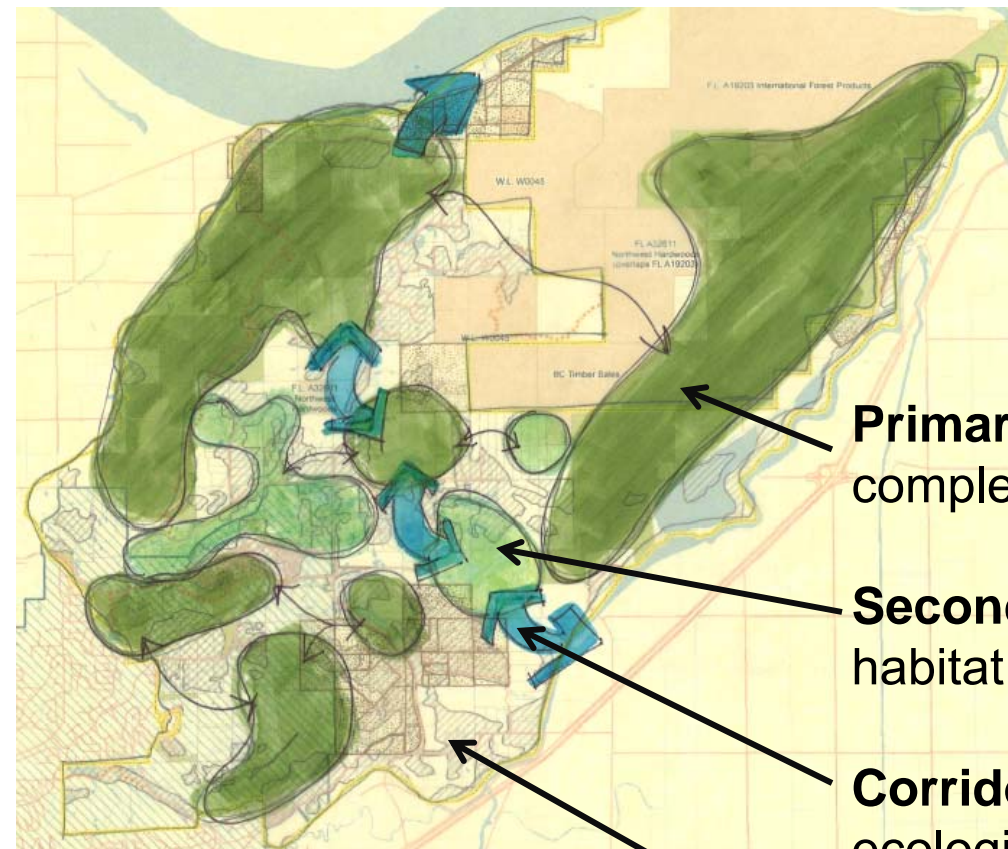
What's a Green Infrastructure Network?

An interconnected network of green space that conserves natural ecosystem values and functions while providing a diverse range of benefits, including:

- environmental
- social/cultural
- recreational
- psychological
- public health
- economic



Green Infrastructure Network



Primary Cores – large contiguous areas of complex ecological processes;

Secondary Cores – smaller areas of natural habitat, stepping stones between hubs;

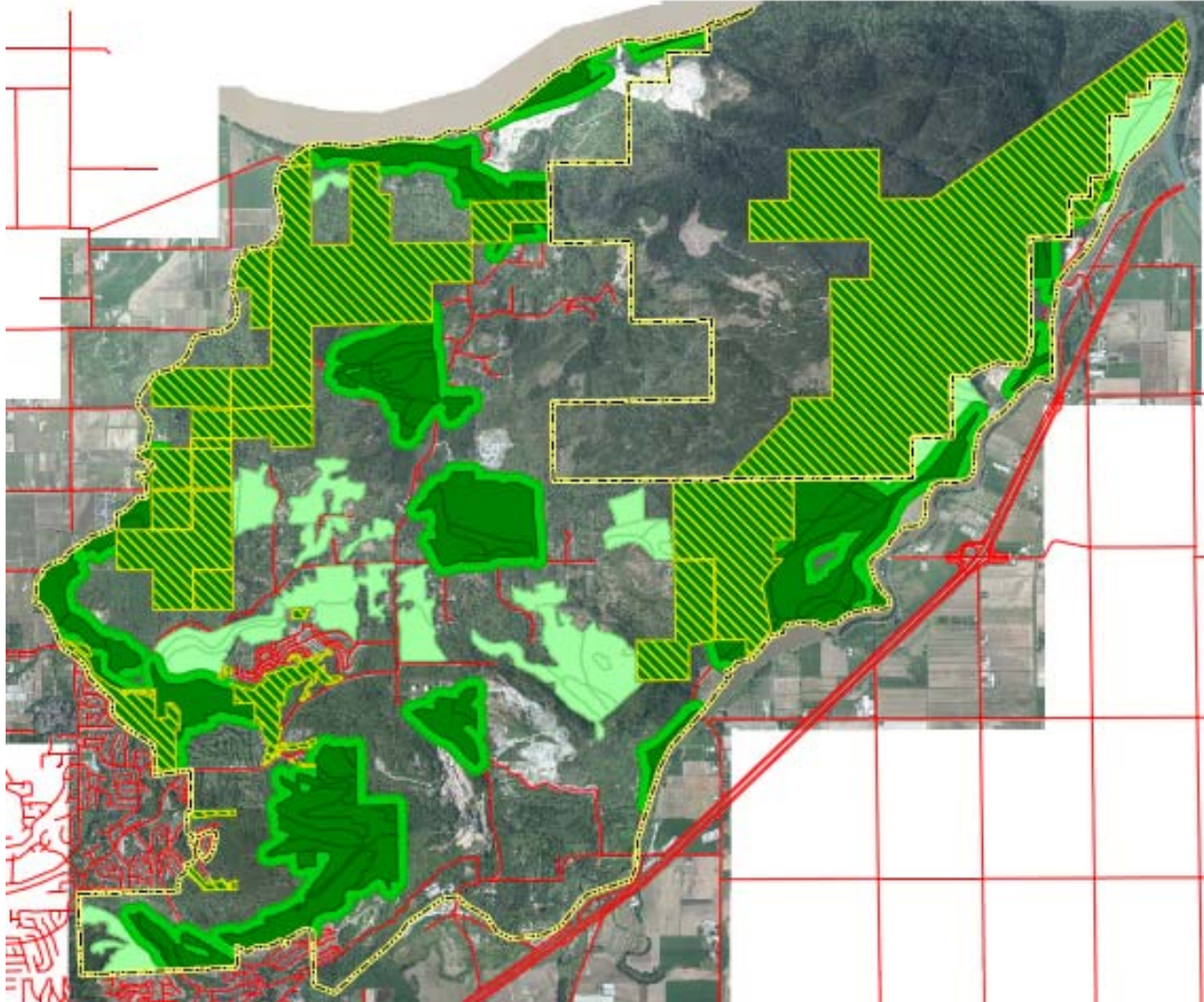
Corridors – pathways that offer species and ecological process connection between hubs;

The Matrix – the rest of the land base with varying ecological value.

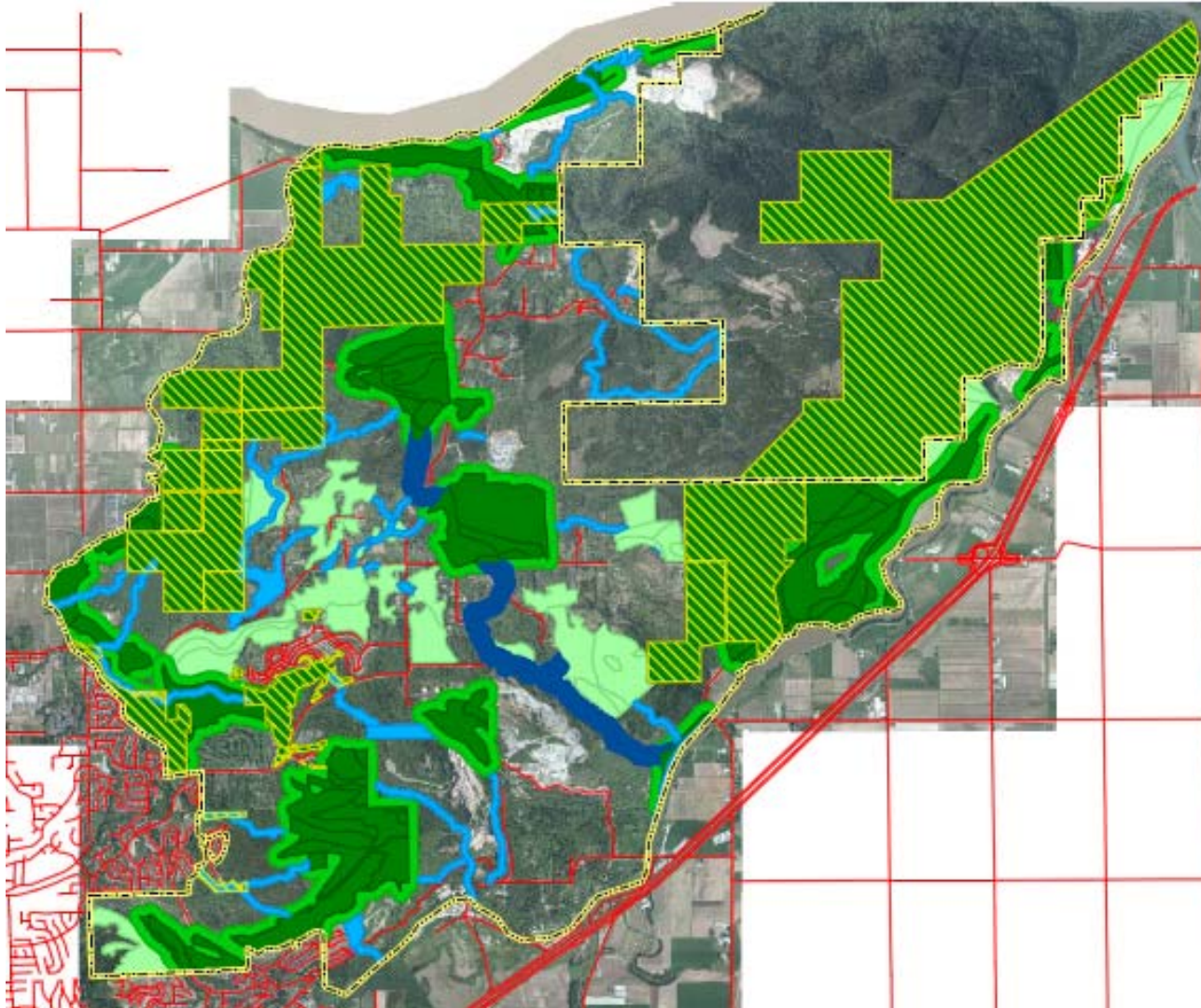
Environmental Management Area Classifications

- Cores
 - primary core
 - buffer
 - hub
- Corridors
 - regional
 - local
 - riparian
- Urban Matrix
 - tertiary habitat
 - disturbance management
 - disturbance restoration

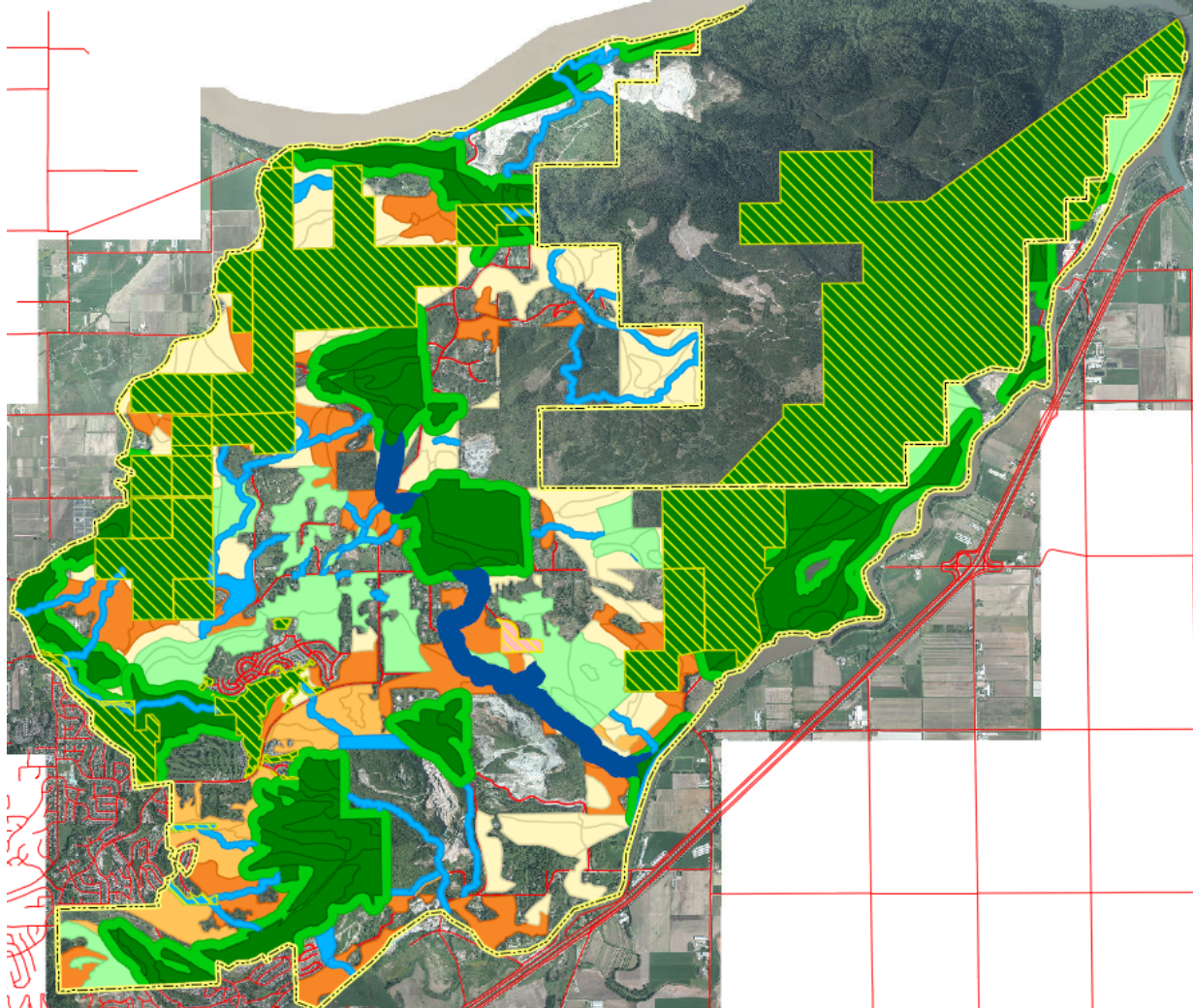
Work to date: Conceptual Cores



Work to date: Conceptual Corridors



Green Infrastructure Network



Primary Cores & Buffers

Description	Objectives	Compatible uses
<ul style="list-style-type: none"> • Highest ecological value / most sensitive • Typically large areas with interior tracts of mature vegetation • Both public owned / protected and private / unprotected lands 	<ul style="list-style-type: none"> • Secure and manage large areas of refuge that protect and enhance ecological and biodiversity values • Avoid human disturbance • Protect all habitat for species and ecosystems at risk 	<ul style="list-style-type: none"> • Development is not permitted • Light recreational uses (i.e. trails for non-motorized vehicles)
<ul style="list-style-type: none"> • Buffers around the Core habitat areas • Varying of vegetation types 	<ul style="list-style-type: none"> • Establish a 100 m wide buffer around Core EMAs • Maintain trees and manage to prevent 'edge-effect' to ecological values inside the Primary Core area 	

Development = land clearing / disturbance such as agriculture, permanent structures

Next Steps

- External Stakeholder Workshop: May 1st
 - Overview to Council: late May/early June
 - First Nations & Area H Meetings (TBD)
 - SMEMP AG Meeting #4: July 5th
 - Draft to Council: August
 - Public Online Survey: mid-September
 - Public Open House: September
 - Final to Council: November
- Develop
- Draft / Refine
- Public Review
- Finalize

SUMAS MOUNTAIN ENVIRONMENTAL MANAGEMENT PLAN

Questions?

SHAPING OUR
FUTURE

